



info@racewood.com www.racewood.com +44 (0)1829 732 006

Replacement of Racehorse Speed Button

1. Introduction and Safety

This instruction covers the replacement of a speed button on a racehorse simulator.

Hazard: The machine is required to be powered down and unplugged whilst the work is being undertaken. The work area is to be controlled by the person undertaking the task.

2. Parts

New parts:

Speed button

N.B. Contact Racewood to determine the correct part number and for supply of the part.

Parts to be re-used:

NA.

Other materials:

NA.

3. Procedure

1. To access the rear of the speed button the plastic on the side of the simulator must be removed using a cross head screwdriver (see Image 1)
2. Once access is achieved, remove the two spade connectors from the terminals on the outside of the speed button (see Image 2)
3. Remove the nut on the rear of the speed button (see Image 2)
4. Remove the button from the bodyshell (see Image 1)
5. Replace the new button into position, replace and tighten the nut.
6. Replace the spade connectors to the outside terminals.
7. Replace the plastic cover on the side of the simulator.
8. Test the machine.



Remove switch and
replace switch

Remove plastic and
access terminals
and nut on rear of
switch

Image 1: Access to the speed button

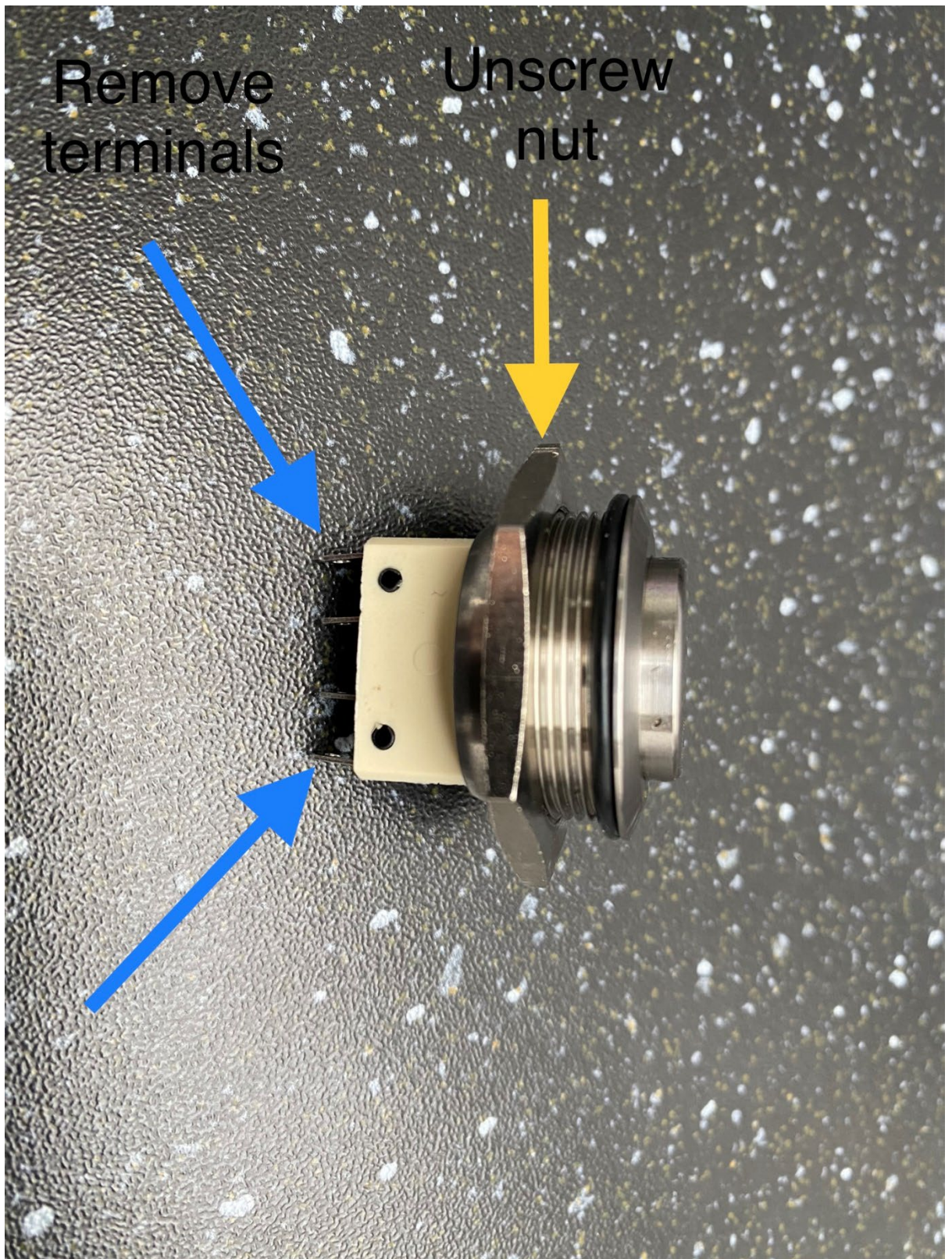


Image 2: Speed button connections and retention